

Arithmetic

1. 1 less than 10

2. $10 + 10$ 3. $? = 9 - 3$

4. ? is double 9



Practice: Time to the Hour

5. Match the clocks to the times.



7 o'clock



3 o'clock

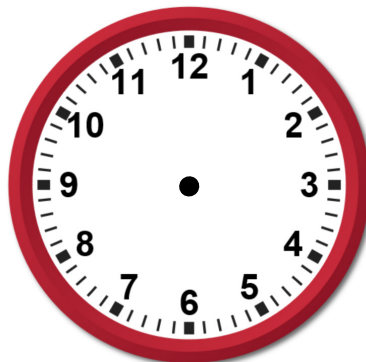


9 o'clock

6. Complete the sentences.

The time is o'clock.The time is o'clock.

7. Draw the hands on the clock to show 5 o'clock.

You might want
to talk to an adultUse resources
to help you

Spot the mistake

8. Complete the pattern.

1 o'clock, 2 o'clock, o'clock, 4 o'clock, o'clock.

9. This clock is missing a minute hand.

Explain how you can work out what time is being shown.



10. The time is 12 o'clock.

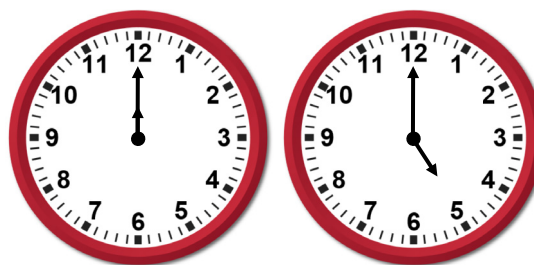
Is this correct?
Explain.



Challenge

11. How many o'clock or on the hour times are between 12 o'clock and 5 o'clock?

How do you know?



Answers

| Q no. | Question | Answer |
|-------|---|---|
| 1 | 1 less than 10 | 9 |
| 2 | $10 + 10$ | 20 |
| 3 | $? = 9 - 3$ | 6 |
| 4 | ? is double 9 | 18 |
| 5 | Match the clocks to the times. | Lines drawn to match clocks to times. |
| 6 | Complete the sentences. | 1, 12 |
| 7 | Draw the hands on the clock to show 5 o'clock. | Drawn - longer minute hand pointing to 12 and shorter hour hand pointing at 5. |
| 8 | Complete the pattern. | 3, 5 |
| 9 | This clock is missing a minute hand. Explain how you can work out what time is being shown. | The hour hand is directly on the hour. The hour hand can only be directly on an hour if it is a full hour (in this case 10 o'clock). |
| 10 | The time is 12 o'clock. Is this correct? Explain. | The clock does not show 12 o'clock. The minute hand has been read incorrectly as the hours. The clock shows 2 o'clock. |
| 11 | How many o'clock or on the hour times are between 12 o'clock and 5 o'clock? How do you know? | There are 4 o'clock times between 12 o'clock and 5 o'clock (1 o'clock, 2 o'clock, 3 o'clock and 4 o'clock). Pupils may draw clocks to show how they know or explain another way that they know. Accept answers that demonstrate an understanding of reading times. |