

Arithmetic

1. 30 less than 81

2. $24 - 8$

3. 7×3

4. $24 + ? = 46$

Practice: Find Durations of Time

5. Circle the clocks that show 20 minute durations.



6. Match the clocks to the durations they show.



5 minutes



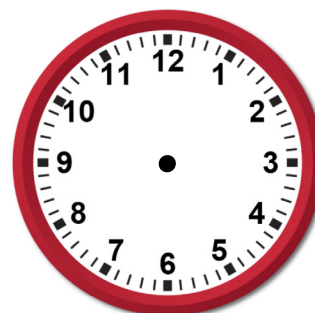
15 minutes



20 minutes

7. Samir left school at quarter past 3 and got home 30 minutes later.

Draw on the blank clock what time Samir got home.



You might want
to talk to an adult



Use resources
to help you



Spot the mistake

8. A race started at quarter to 6. Here is how long each animal took to finish the race.



Chicken - 15 minutes



Frog - 10 minutes



Snake - 25 minutes

Who finished the race at the time shown on the clock?

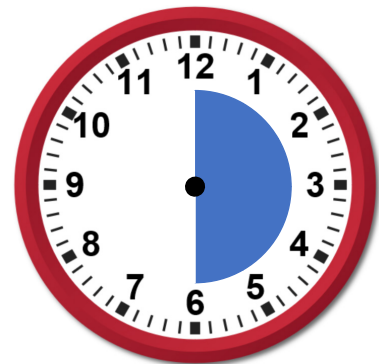


9. What is a 'duration of time'?

10. Aiden says this shows a duration of 6 minutes.

Is Aiden right?

Explain.



11. Susan is watching a film. It is 2 hours long.
The film finishes at twenty minutes past five.

What time did the film start?

How do you know?

Answers

| Q no. | Question | Answer |
|-------|--|--|
| 1 | 30 less than 81 | 51 |
| 2 | $24 - 8$ | 16 |
| 3 | 7×3 | 21 |
| 4 | $24 + ? = 46$ | 22 |
| 5 | Circle the clocks that show 20 minute durations. | Clocks with 20 minute durations circled. |
| 6 | Match the clocks to the durations they show. | Clocks matched to correct labels. |
| 7 | Samir left school at quarter past 3 and got home 30 minutes later. | Clock showing quarter to 4 (longer minute hand pointing to 9, shorter hour hand just before 4) |
| 8 | A race started at quarter to 6. Here is how long each animal took to finish the race. | snake |
| 9 | What is a 'duration of time'? | A duration of time is how long there is during an event (from start to finish). |
| 10 | Aiden says this shows a duration of 6 minutes. Is Aiden right? Explain. | Aiden has not counted in fives to calculate the duration. This actually shows a duration of 30 minutes. |
| 11 | Susan is watching a film. It is 2 hours long. The film finishes at twenty minutes past five. What time did the film start? How do you know? | Pupils should know that the minutes do not change as the film is 2 hours and 0 minutes long. They should then identify that they need to subtract 2 hours from 5pm. The film started at twenty minutes past three. |