

## Arithmetic

1.  $99 - ? = 29$

2.  $64 + ? = 84$

3.  $\frac{2}{4}$  of 20

4.  $25 \div 5$



## Practice: O'clock and Half Past

5. Match the clocks to the times.



9 o'clock



1 o'clock



8 o'clock

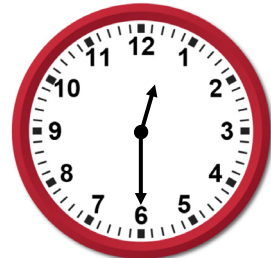
6. Match the clocks to the times.



half past 6



half past 3



half past 12

7. Write the times that the clocks show.

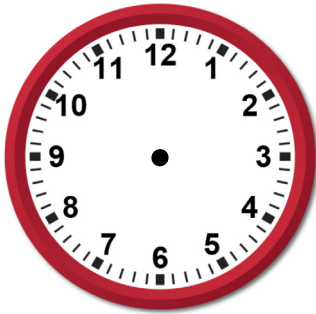




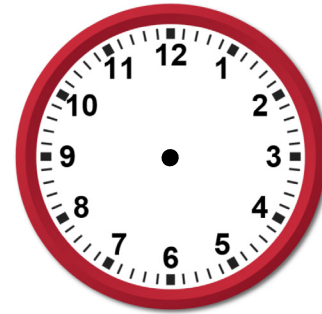
You might want  
to talk to an adultUse resources  
to help you

Spot the mistake

8. Draw hands on the clocks to show the times.



4 o'clock



half past 4

9. What is the time on the broken clock?



Explain how you know.

10. Robyn says the time is 10:30.

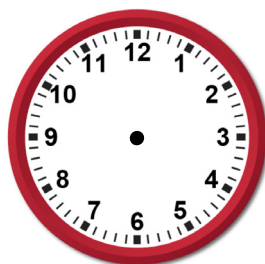


Explain why she is right or wrong.

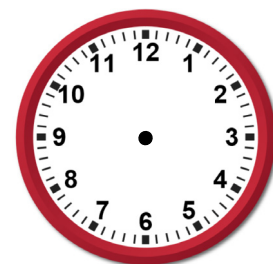
11. Seth was watching TV. The cartoons he watched ended at 4:00 and were on for half an hour.

Draw the hands on the clock to show the start and end time of the cartoons.

start



end



## Answers

Q no.	Question	Answer
1	$99 - ? = 29$	70
2	$64 + ? = 84$	20
3	$\frac{2}{4}$ of 20	10
4	$25 \div 5$	5
5	Match the clocks to the times.	Lines drawn to match clocks to correct times.
6	Match the clocks to the times.	Lines drawn to match clocks to correct times.
7	Write the times that the clocks show.	10 o'clock, Half past 11.
8	Draw hands on the clocks to show the times.	Longer minute hand drawn pointing to 12 and shorter hour hand at 4. Longer minute hand drawn pointing at 6 and shorter hour hand half way between 4 and 5.
9	What is the time on the broken clock? Explain how you know.	As the hour hand is directly between the four and the five, the time must be half past four.
10	Robyn says the time is 10:30. Explain why she is right or wrong.	Robyn is wrong as the clock is showing 9:30. She has looked at the incorrect number to find the hours.
11	Seth was watching TV. The cartoons he watched ended at 4:00 and were on for half an hour.  Draw the hands on the clock to show the start and end time of the cartoons.	This question requires the pupils to work backwards using the given information. They know the end time is 4:00 and can draw this on one of the clocks. They then need to take away half an hour. This gives them 3:30, which they can then also draw on a clock.