

## Arithmetic

1.  $24 = 36 - ?$

2.  $36 + 24$

3.  $40 \div 5$

4.  $2 \times 9$

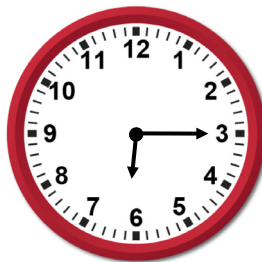


## Practice: Quarter Past and Quarter To

5. Match the clocks to the times.



quarter past 12



quarter past 1



quarter past 6

6. Match the clocks to the times.



quarter to 12



quarter to 9



quarter to 1

7. Write the times that the clocks show.

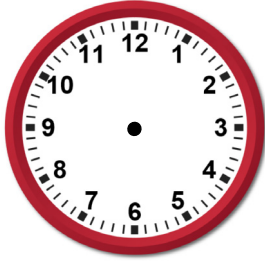




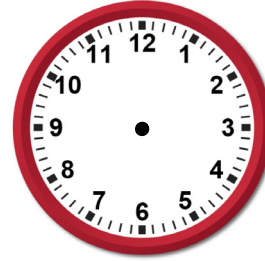
You might want  
to talk to an adultUse resources  
to help you

Spot the mistake

8. Draw hands on the clocks to show the times.

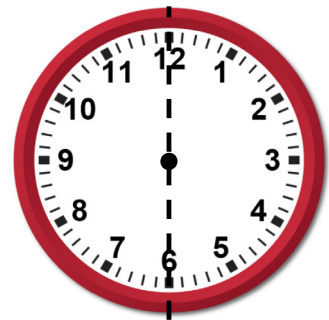


quarter past 3



quarter to 8

9. Explain how you know when to use 'past' and when to use 'to' when saying a time.

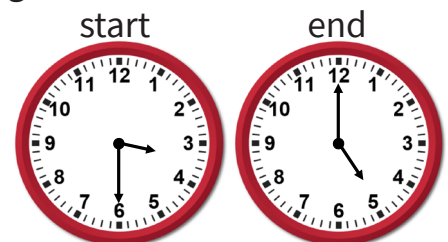


10. Jerry says the time is quarter past 6.



Explain why he is right or wrong.

11. When walking, Darcy notices a bus pass every 15 minutes. She starts walking at half past three and finishes walking at five o'clock. She sees the first bus at half past three. Write the times she will see the next buses.



## Answers

Q no.	Question	Answer
1	$24 = 36 - ?$	12
2	$36 + 24$	60
3	$40 \div 5$	8
4	$2 \times 9$	18
5	Match the clocks to the times.	Lines drawn to match clocks to correct times.
6	Match the clocks to the times.	Lines drawn to match clocks to correct times.
7	Write the times that the clocks show.	Quarter past 11, quarter to 6
8	Draw hands on the clocks to show the times.	Longer minute hand drawn pointing to 3 and shorter hour hand just after 3. Longer minute hand drawn pointing at 9 and shorter hour hand just before 8.
9	Explain how you know when to use 'past' and when to use 'to' when saying a time.	'Past' is used when the minute hand is on the right hand side of the clock face. 'To' is used when the minute hand is on the left hand side of the clock face.
10	Jerry says the time is quarter past 6. Explain why he is right or wrong.	Jerry is wrong and has made two mistakes. He has used 'past' instead of 'to' and he has misidentified the hours. Pupils can find 'to' times confusing as the hour hand is close to the next hour. The time is quarter to 7.
11	When walking, Darcy notices a bus pass every 15 minutes  She starts walking at half past three and finishes walking at five o'clock.  She sees the first bus at half past three.  Write the times she will see the next buses.	quarter to four, four o'clock, quarter past four, half past four, quarter to five, five o'clock